

PROGRAM



TWENTY¹⁰
KLC

CONFERENCE & EXPO
UNLOCK THE POSSIBILITIES



Kentucky League of Cities

SEPTEMBER 14 - 17, 2010

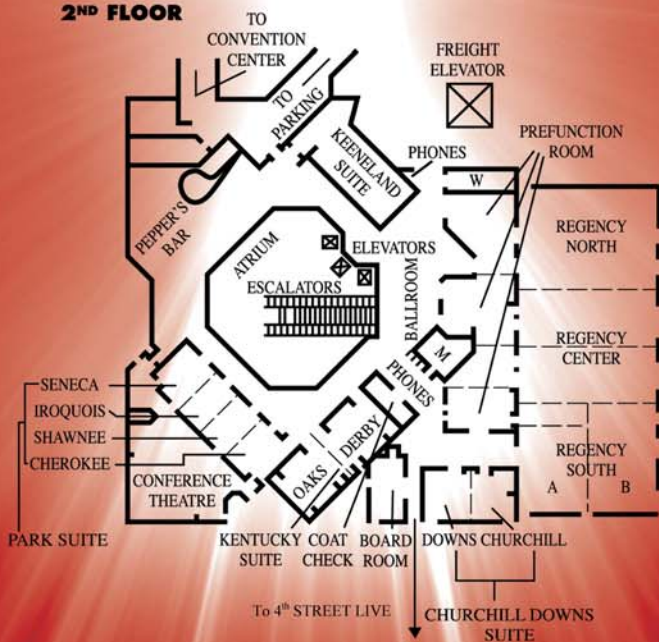
Hyatt Regency, Louisville, KY

Hyatt Regency Louisville

1ST FLOOR



2ND FLOOR





TWENTY10 KLC CONFERENCE & EXPO UNLOCK THE POSSIBILITIES

Table of Contents

KLC Officers	2
Host City's Welcome	3
President's Welcome	4
Director's Welcome	5
General Information	6 - 7
Distinguished Guests	8 - 9
Schedule of Events	10 - 29
KLC Staff	31 - 45
Exhibit Hall Floor Plan	47
Exhibitor Directory	48 - 50
Cornerstone Partners	51 - 52

KLC Officers



Mayor Elaine Walker

City of Bowling Green, First Vice President/
Acting President



Mayor William Paxton

City of Paducah, Second Vice President



Mayor Connie Lawson

City of Richmond, Immediate Past President



Neil Hackworth

KLC Executive Director

Host City's Welcome



Dear Friends:

I am pleased to welcome the Kentucky League of Cities 2010 Annual Conference & Expo to Possibility City! I assure you that Louisville will roll out the red carpet and do everything possible to make you feel at home.

In just the two years since your last convention here, there's been a world of change, especially downtown. On October 10, our new waterfront arena - the \$238 million KFC Yum! Center will open to host University of Louisville basketball games, NCAA tournament competitions, conventions and major concerts such as the Eagles. It will be the finest facility of its kind in the nation and will be a huge asset for the entire Commonwealth in attracting tourism and convention business.

The new arena has also sparked incredible investment and development in surrounding blocks - as it creates the same economic impact for our downtown core that our Louisville Slugger baseball park did, and is still doing, for the area just east of downtown.

Museum Row along historic Main Street also continues to grow, with new exhibits at the Louisville Slugger Museum and Factory, the Muhammad Ali Center, and Louisville Science Center.

You'll also notice that our award-winning Waterfront Park, the front door to our community, is now nearly complete and welcomes about 1.5 million visitors each year. In eastern Louisville, we are underway with one of the largest parks expansion projects in the nation, a true public/private partnership that will add 4,000 acres of greenspace, parkways and recreation.

Louisville is also the gateway to Bourbon Country, and I urge you to explore our city's Urban Bourbon Trail which we use to launch visitors from around the world onto the Kentucky Bourbon Trail and the distilleries and visitor centers where 95 percent of the world's bourbon is produced.

I hope our city will provide plenty of inspiration for "unlocking the possibilities" during your workshops and discussions.

I wish only the best for your own communities in the future - and I hope you'll return to visit our hometown very soon.

Sincerely,

A handwritten signature in black ink that reads "Jerry E. Abramson". The signature is fluid and cursive, with a long horizontal line extending from the end.

Jerry E. Abramson
Mayor, Louisville Metro

President's Welcome



Dear Colleagues and Friends:

Welcome to the 2010 Kentucky League of Cities Conference & Expo. There is no better place to be inspired than right here!

This year's conference focuses on exchanging ideas with each other. In addition, we'll hear from experts on critical challenges we all face as city officials.

As you know, I began the role as KLC president a few weeks early when former Jackson Mayor and KLC President Mike Miller moved into another area of public service. I am sure you will join me in congratulating him on his position as the executive director of the Kentucky River Area Development District and thank him for his tremendous leadership of our association. During the past year, Mike shepherded KLC through a time of unprecedented change.

Now, KLC has moved into an era of renewed member focus and heightened transparency. Existing KLC services continue to thrive, and we will announce new member services during the conference which include expanded training services and new programs to connect members with each other and with KLC staff.

KLC is a world-class organization that works on behalf of Kentucky cities every day. I am extremely eager and honored to serve as your president in the upcoming year. But as our association strives to fulfill its mission to members, it's imperative that members be involved.

Please communicate with the KLC Executive Board, Board of Directors, our affiliate organization boards and our talented KLC executives and staff. We need and want to hear from you continuously in order to better meet your needs and expectations.

I encourage you to take advantage of every minute of the training, hospitality and resources you will find at the Conference & Expo. And be sure to explore our beautiful host city. Downtown Louisville offers so much to see and do.

KLC is committed to delivering on our mission of "supporting community innovation, effective leadership and quality governance." Thanks for your commitment to KLC and for being here this year. When our communities come together, we unlock new possibilities for cities all across Kentucky!

Sincerely,

A handwritten signature in cursive script that reads "Elaine Walker".

Mayor Elaine Walker
First Vice President/Acting President, Kentucky League of Cities,
Mayor of Bowling Green

Director's Welcome



Dear KLC Members:

It is my pleasure to welcome you to the 2010 Kentucky League of Cities Conference & Expo. With your input, our staff has developed learning options to enlighten and challenge how we think about our cities. There will also be plenty of time to network with peers and enjoy Louisville.

For the last year, we've been listening intently to city officials and employees. As a result, we will be announcing several new member programs to complement the services we already provide every day to our members.

As a former mayor, I am confident that our conference agenda will provide you with information and resources you need. And of course, the conference is just one aspect of your KLC membership. I hope you will continue to take full advantage of KLC learning events, services and our staff.

One of the things I enjoy most about our conference is the opportunity to recognize your outstanding work. During the conference we will acknowledge individuals who are committed to ongoing learning with our Public Official Essential Skills Institute (POESI) awards. The KLC Enterprise Cities Awards represent some of the most innovative community programs in Kentucky. And our City Official of the Year and City Employee of the Year will honor visionaries who represent the best of the best in public leadership.

On a personal note, this will be my last KLC Conference as either an elected official or employee of KLC. My first convention was at the Drawbridge Inn in Fort Mitchell in 1981. I will be retiring from KLC January 1, 2011. I have many wonderful memories of KLC and of past conventions. And I will never forget the friends and associates I have met and worked with over the years in our efforts to make Kentucky cities better places to live, work and play. I have had the honor of serving as KLC president and the privilege of serving as deputy executive director and executive director. KLC is a great association that has served its member well for 83 years. Kentucky is a much better place and cities are stronger because of the Kentucky League of Cities. I am confident that the years ahead will be even brighter for Kentucky communities and for KLC. I hope you will welcome new leadership and support their efforts to bring new energy and vision to KLC.

Thank you for your attendance, and I truly look forward to visiting with you throughout the conference.

Sincerely,

A handwritten signature in black ink, appearing to read "Neil Hackworth". The signature is fluid and cursive, written over a light background.

Neil Hackworth
Executive Director
Kentucky League of Cities

General Information

Registration Hours - Kentucky Suite, 2nd Floor

Tuesday 3:00 p.m. - 6:30 p.m.

Wednesday 8:00 a.m. - 6:00 p.m.

Thursday 8:00 a.m. - 7:00 p.m.

Friday 8:00 a.m. - 2:00 p.m.



Expo Hours - Kentucky International Convention Center (KICC)

Wednesday

Welcome Reception 5:00 p.m. - 7:30 p.m.

Thursday

Exhibits Open 8:30 a.m. - 1:00 p.m.

Breakfast 8:30 a.m. - 9:30 a.m.

Cracker Barrels 10:00 a.m. - 11:30 a.m.

Lunch 12:00 p.m. - 1:00 p.m.



Chill Zone and Internet Café - Keeneland Room, 2nd Floor

Available to check email, enjoy refreshments or network between sessions. (See registration hours.)

Public Officials Essential Skills Institute (POESI)

The Public Officials Essential Skills Institute (POESI) is a continuing education program established to encourage and recognize the efforts of city officials to become effective leaders. POESI credits may be earned by all KLC Leadership Center students who attend educational workshops. To learn more about the POESI program and how you can earn credit hours, please contact Rebecca Morton, Leadership Education Administrator at 859-977-4171, or rmorton@klc.org. We are making some exciting changes to the program coming in January 2011!

Cracker Barrel Sessions - Kentucky International Convention Center

Held during the expo on Thursday, these very popular and fast-paced round table sessions are a great way to network and gather information on several topics of interest in a short period of time.

General Information



Say "CHEESE"!

Pictures make wonderful memories. Say "cheese" when KLC staff members take your photo throughout the conference, and then visit our new photo wall located in the Internet Café to view all the photos. Choose your favorite photo and receive a complimentary display frame.

Convention Identification

Please wear your name badge to all scheduled functions. KLC staff will be scanning badges as you enter meal functions, workshops and other scheduled events. This will also act as your entry for door prizes to be drawn at random events.

EMS and Security

In case of an emergency or need for security, please notify the registration desk or dial 911.

Lost & Found

Please turn in any lost and found items to a KLC staff member located at the registration counter.

What to Wear

Conference attire is business casual. Meeting room temperatures will vary so bring a sweater or jacket. The Thursday evening banquet is cocktail or business attire.



Could You Use an Extra \$100?

Instead of a grand prize drawing on the last day of the conference, KLC will be giving away \$100 American Express gift cards at random events throughout the conference. Be sure to attend all the scheduled events and wear your name badge! KLC staff will be scanning your badge upon entry and this will be your ticket to enter the drawing!

Distinguished Guests



Steve Austin

Director
Legacy Center at the Bluegrass Community Foundation



Governor Steve Beshear (Invited)

Commonwealth of Kentucky



Robin Crow

Innovative Guitarist and CEO/Founder
Dark Horse Recording



The Honorable Dennis Horlander

Kentucky House of Representatives



Kim Huston

President and Chief Operating Officer
Nelson County Economic Development Agency

Distinguished Guests



The Honorable Alice Forgy Kerr
Kentucky Senate



John Long
Chairman
World Equestrian Games Foundation Board



Michael D. Miller
Executive Director, Kentucky River ADD



The Honorable Carl Rollins
Kentucky House of Representatives



The Honorable Kevin Sinnette
Kentucky House of Representatives



TWENTY10
KLC
CONFERENCE & EXPO
UNLOCK THE POSSIBILITIES

Schedule of Events

2010 KLC CONFERENCE & EXPO

HYATT REGENCY
LOUISVILLE, KENTUCKY

Schedule at a Glance

TUESDAY – SEPTEMBER 14

11:00 a.m. - 2:30 p.m.	KLC Board of Directors Meeting - Meeting 1
3:00 p.m. - 6:30 p.m.	Registration
3:30 p.m. - 5:00 p.m.	Association Meetings
4:30 p.m. - 6:00 p.m.	KLC Board of Directors Meeting - Meeting 2
6:00 p.m. - 6:30 p.m.	KLC Executive Board Meeting
7:00 p.m. - 9:00 p.m.	Opening Reception

WEDNESDAY – SEPTEMBER 15

8:00 a.m. - 6:00 p.m.	Registration
9:00 a.m. - 10:00 a.m.	Opening General Session
10:15 a.m. - 11:45 a.m.	Breakout Sessions
12:00 p.m. - 1:30 p.m.	Lunch & Keynote Address
1:30 p.m. - 1:45 p.m.	KLC Annual Business Meeting
2:00 p.m. - 3:00 p.m.	Facilitated Networking Sessions
3:15 p.m. - 4:15 p.m.	Workshops
5:00 p.m. - 7:30 p.m.	Networking Reception in Expo Dinner on Your Own

THURSDAY – SEPTEMBER 16

8:00 a.m. - 7:00 p.m.	Registration
8:30 a.m. - 1:00 p.m.	Expo Open
8:30 a.m. - 9:30 a.m.	Cornerstone Partner Appreciation Breakfast
10:00 a.m. - 11:30 a.m.	Cracker Barrels
12:00 p.m. - 1:00 p.m.	Lunch with Exhibitors
1:30 p.m. - 2:30 p.m.	General Session
2:45 p.m. - 5:00 p.m.	Workshops
6:30 p.m. - 7:00 p.m.	President's Reception
7:00 p.m. - 1:00 a.m.	President's Banquet/Entertainment by Endless Summer Band

FRIDAY – SEPTEMBER 17

8:00 a.m. - 2:00 p.m.	Registration
8:00 a.m. - 9:15 a.m.	Breakfast Breakout: Network with Peer Cities
9:30 a.m. - 11:45 a.m.	Workshops
12:00 p.m. - 1:45 p.m.	Awards/Closing Luncheon
1:00 p.m. - 2:00 p.m.	MAAK Meeting
2:00 p.m. - 5:15 p.m.	City Attorney CLE Training

TUESDAY – DAILY SCHEDULE

11:00 a.m. - 2:30 p.m. KLC Board of Directors Meeting - Meeting 1

3:00 p.m. - 6:30 p.m. Registration

3:30 p.m. - 5:00 p.m. Association Meetings

4:30 p.m. - 6:00 p.m. KLC Board of Directors Meeting - Meeting 2

6:00 p.m. - 6:30 p.m. KLC Executive Board Meeting

7:00 p.m. - 9:00 p.m. Opening Reception

Tuesday September 14

- 11:00 a.m. – 2:30 p.m. **KLC Board of Directors Meeting - Meeting 1**
Presiding: Mayor Elaine Walker, KLC First Vice President/Acting President, City of Bowling Green
Location: Regency Ballroom, 2nd Floor
- 3:00 p.m. – 6:30 p.m. **Registration**
Delegate, Exhibitor, Guest and Speaker Registration
Location: Kentucky Suite, Hyatt Regency, 2nd Floor
- 3:00 p.m. – 6:30 p.m. **Chill Zone/Internet Café**
Location: Keeneland Room, Hyatt Regency, 2nd Floor
- 3:30 p.m. – 5:00 p.m. **Association Meetings**
Kentucky Black Caucus of Local Elected Officials (KBC-LEO)
Presiding: Stan Holmes, President, City of Radcliff
Location: Iroquois - Seneca Rooms
Kentucky City/County Management Association (KCCMA)
Presiding: Dan Groth, President, City of Independence
Location: Cherokee - Shawnee Rooms
- 4:30 p.m. – 6:00 p.m. **KLC Board of Directors Meeting - Meeting 2**
Presiding: Mayor Elaine Walker, KLC First Vice President/Acting President, City of Bowling Green
Location: Regency Ballroom, 2nd Floor
- 6:00 p.m. – 6:30 p.m. **KLC Executive Board Meeting**
Presiding: Mayor Elaine Walker, KLC First Vice President/Acting President, City of Bowling Green
Location: Regency Ballroom, 2nd Floor
- 7:00 p.m. – 9:00 p.m. **Opening Reception - The Spire**
Location: Hyatt Regency, Top Floor



Located on the top floor of the Hyatt Regency, the Spire will provide a relaxing evening of fun, food and a spectacular 360 degree view of Louisville.

WEDNESDAY – DAILY SCHEDULE

- | | |
|-------------------------|---------------------------------|
| 8:00 a.m. - 6:00 p.m. | Registration |
| 9:00 a.m. - 10:00 a.m. | Opening General Session |
| 10:00 a.m. - 2:00 p.m. | IES Training Simulator |
| 10:15 a.m. - 11:45 a.m. | Breakout Sessions |
| 12:00 p.m. - 1:30 p.m. | Lunch & Keynote Address |
| 1:30 p.m. - 1:45 p.m. | KLC Annual Business Meeting |
| 2:00 p.m. - 3:00 p.m. | Facilitated Networking Sessions |
| 3:15 p.m. - 4:15 p.m. | Workshops |
| 5:00 p.m. - 7:30 p.m. | Networking Reception in Expo |
| | Dinner on Your Own |

Wednesday September 15

8:00 a.m. – 6:00 p.m.

Registration

Delegate, Exhibitor, Guest and Speaker Registration
Location: Kentucky Suite, Hyatt Regency, 2nd Floor

8:00 a.m. – 6:00 p.m.

KLC Chill Zone/Internet Cafe'

Location: Keeneland Room, Hyatt Regency, 2nd Floor

9:00 a.m. – 10:00 a.m.

Opening General Session

"Little Cities = Big Opportunities"

Presiding: Neil Hackworth, Executive Director, KLC

Keynote Presenter: Kim Huston, Author and President and Chief Operating Officer, Nelson County Economic Development Agency

Keynote Presenter: Steve Austin, Director, Legacy Center at the Bluegrass Community Foundation

Location: Regency Ballroom, 2nd Floor

Small is sexy. That's according to Kim Huston, an economic developer from Bardstown, Kentucky and author of *Small Town Sexy: The Allure of Living in Small Town America*. With technology, people can live and do business anywhere. Huston will explore how small towns can harness the romance of small cities where young people can raise families and retirees can access climate, recreation and other amenities.

While the charm of small towns is appealing, Steve Austin will discuss how they can compete on the global stage, for business, talent and people. Austin has more than 23 years as a town and regional planner. What makes your town unique? Does your city embrace healthy policies, culture and diversity? You'll learn how to assess where you are on the global scale as a marketable place to live and do business.

10:00 a.m. – 12:00 p.m.

IES Training Simulator

Presenter: Mark Filburn, KLC Law Enforcement Specialist

Presenter: Tony Hampton, KLC Law Enforcement Specialist

Location: Churchill Downs Suite

The simulator is a computerized system that projects scenarios on to a screen and officers respond with the appropriate levels of force. Officers are filmed and provided feedback on their actions to include shot placement and verbal commands.

The Kentucky League of Cities recently purchased three updated IES MILO Systems that include high definition and patrol rifles. We would like to invite all elected officials to experience the various situations that our police officers face on a daily basis.

Wednesday September 15

10:15 a.m. – 11:45 a.m.

Breakout Sessions

From Backyard Chickens to Biofuels: Lessons from Kentuckians Who Are Leading the Charge to Make Their Cities More Independent

Presenter: Steve Austin, Director, Legacy Center at the Bluegrass Community Foundation

Location: Seneca - Iroquois Rooms

This session will offer practical examples of the many ways that groups and individuals are working to increase local self-reliance in everything from local food to energy to jobs.

Small Town Sexy: Promoting Your Town's Allure For Its Future Success

Presenter: Kim Huston, Author and President and Chief Operating Officer, Nelson County Economic Development Agency

Location: Shawnee - Cherokee Rooms

Small town economic development is not just about smokestack chasing anymore but about becoming proactive in defining your community as a great place to live and work. Communities must rethink their economic development efforts and work to promote entrepreneurship and develop a "cool" quality of life factor to not only help lure our best and brightest back home but to also better engage those who never left.

12:00 p.m. – 1:30 p.m.

Lunch & Keynote Address

"How'd They Do That?" Lessons From How Lexington, Kentucky Attracted the Biggest Sporting Event in North America

Presiding: Mayor Elaine Walker, KLC First Vice President/Acting President, City of Bowling Green

Keynote Presenter: John Long, Chairman, World Equestrian Games Foundation Board

Location: Regency Ballroom, 2nd Floor

John Long, directly involved in the equine industry for 20 years, serves as Chairman of the World Games 2010 Foundation Board developed for the planning process for the FEI World Equestrian Games to be held in Lexington this year. Mr. Long will discuss what steps were taken for Lexington to win the bid to host the World Games and what the Games will mean for cities of the Commonwealth. The Games will be the largest event ever held in Kentucky and the largest sporting event in 2010 in the United States.

Wednesday September 15

1:30 p.m. – 1:45 p.m.

KLC Annual Business Meeting

Presiding: Mayor Elaine Walker, KLC First Vice President/Acting President, City of Bowling Green

Location: Regency Ballroom, 2nd Floor

2:00 p.m. – 3:00 p.m.

Facilitated Networking Sessions

Share ideas, best practices and lessons learned with your peers from cities all across the state. Learn from colleagues in other cities who face the same challenges that you do as a city official. Take advantage of this opportunity to make valuable contacts and connections with fellow city officials. Choose from one of the following topics:

Community Development

Facilitator: Tad Long, Director of Business Development, NewCities Institute

Guest Speaker: Sherman Bowman, Councilmember, City of Bonnieville

Guest Speaker: Will Cox, Mayor, City of Madisonville

Guest Speaker: Gayle Davis, City Clerk, City of Scottsville

Location: Gulfstream - Hialeah Rooms

Ever wonder why your neighbors' (i.e. other cities') yards are greener than yours? Does your city struggle to get things done? How do others figure out who should be on the bus and how to convince them to come for a ride? Share your ideas for community improvement and gain some insight on how others who know how to get 'er done!

Education & Workforce Development

Facilitator: Carolyn Witt Jones, Special Assistant, Partnership at NewCities

Tom Prather, Executive Vice President/Acting President, NewCities Institute

Guest Speaker: Denny Bowman, Mayor, City of Covington

Guest Speaker: Ed Burtner, Mayor, City of Winchester

Guest Speaker: Polly Marquette, Director, Kentucky Scholars Initiative

Location: Belmont Room

Education and workforce development are the foundation of successful communities. Please share your ideas for improving education and workforce development and learn what other communities are doing to train and educate the workforce of the next generation.

Wednesday September 15

Environmental Issues

Facilitator: Joe Ewalt, Director of Policy Development, KLC
Andrew Stoeckinger, Program Coordinator, Bluegrass Pride
Location: Pimlico B-C

Bring us your questions, best practices and environmental horror stories. We will make sure you leave with informative publications on new ways of thinking that can build environmental stewardship into your city's existing planning and zoning regulations. There will also be tips on keeping your community in compliance with state water quality requirements and contact information for the people in state government who can help you understand the increasing complex rules for stormwater management.

Legislative Perspectives

Facilitator: J.D. Chaney, Director of Governmental Affairs, KLC
Location: Oaklawn Room

Come for an open discussion on city priorities for the 2011 session. This is your opportunity to ask questions about the legislative issues that affect your city and find out how you can best advocate in Frankfort.

2:00 p.m. - 4:00 p.m.

IES Training Simulator

Presenter: Mark Filburn, KLC Law Enforcement Specialist
Presenter: Tony Hampton, KLC Law Enforcement Specialist
Location: Churchill Downs Suite

(See description on page 15.)

3:15 p.m. - 4:15 p.m.

Workshops

Back to Basics - City Spending

Presenter: Laura Milam Ross, Legal Services Counsel, KLC
Location: Gulfstream - Hialeah Rooms

This workshop will focus on the legal requirements for expenditure of city funds. It will provide an overview of public purpose spending as well as executive and legislative responsibilities regarding the budget, contracting, procurement and disposal of surplus property.

Making the Best of Your 21st Century Soapbox: Using Social Media & Networking to Your Advantage

Presenter: Sandra Noble Canon, Executive Vice President, Program Policy, Community Ventures Corporation
Location: Oaklawn Room

Wish you knew how to plug into the flow of Facebook, Twitter, MySpace and LinkedIn? Wish you knew what all of the chatter

was about? Ever think about how to create a buzz about your goods and services to your constituents? Do you look for new partnerships and alliances? Join us for an interactive session about social networking and building stronger relationships with your constituents, customers and potential partners. We will review and experience the world of connecting using new and traditional techniques.

KY Scholars: Is Your City Growing the Best Workforce That Money Can Buy?

Presenter: Polly Marquette, Director, Kentucky Scholars Initiative

Location: Pimlico B-C

What can city officials do to make certain young people are preparing to compete in tomorrow's workplace? How can you tell when your community is growing the best possible workforce? What's one of the most cost effective ways to get there? Join us for this discussion on how Kentucky Scholars and the Partnership for 21st Century Skills are providing a clear road map for students and their communities as they get ready for the opportunities and challenges that come with a global economy.

Understanding Personnel Policies

Presenter: Presenter: Mitzi Root, PHR, Senior Consultant, IntegrityHR

Location: Belmont Room

This session will discuss the importance of documenting personnel policies and the essential elements to include when developing a policy or handbook. Learn common pitfalls to avoid and how to effectively communicate the policies to employees.

5:00 p.m. - 7:30 p.m.

Networking Reception in Expo

Location: Kentucky International Convention Center, Halls 1 & 2

Don't miss this valuable networking opportunity to meet face-to-face with suppliers and learn about the newest products and services available to cities.

Dinner on Your Own

Thursday September 16

THURSDAY – DAILY SCHEDULE

8:00 a.m. - 7:00 p.m.	Registration
8:30 a.m. - 1:00 p.m.	Expo Open
8:30 a.m. - 9:30 a.m.	Cornerstone Partner Appreciation Breakfast
10:00 a.m. - 11:30 a.m.	Cracker Barrels
12:00 p.m. - 1:00 p.m.	Lunch with Exhibitors
1:00 p.m. - 4:00 p.m.	IES Training Simulator
1:30 p.m. - 2:30 p.m.	General Session
2:45 p.m. - 5:00 p.m.	Workshops
6:30 p.m. - 7:00 p.m.	President's Reception
7:00 p.m. - 1:00 a.m.	President's Banquet
	Entertainment by Endless Summer Band

Thursday September 16

- 8:00 a.m. – 7:00 p.m. **Registration**
Delegate, Exhibitor, Guest and Speaker Registration
Location: Kentucky Suite, Hyatt Regency, 2nd Floor
- 8:00 a.m. – 7:00 p.m. **KLC Chill Zone/Internet Cafe'**
Location: Keeneland Room, Hyatt Regency, 2nd Floor
- 8:30 a.m. – 1:00 p.m. **Expo Open**
Location: KY International Convention Center, Halls 1 & 2
- 8:30 a.m. – 9:30 a.m. **Cornerstone Partner Appreciation Breakfast**
Location: Expo, KY International Convention Center, Halls 1 & 2
- 10:00 a.m. – 11:30 a.m. **Cracker Barrels**
Location: Expo, KY International Convention Center, Halls 1 & 2
This popular series of roundtable discussions offers conference attendees the opportunity to share ideas, opinions and find solutions to a variety of issues in a relaxed, face-to-face environment with your peers. Each roundtable will be hosted by a subject matter expert or someone who has a special interest in that topic. **(See list of Cracker Barrels on page 24.)**
- 12:00 p.m. – 1:00 p.m. **Lunch with Exhibitors**
Location: Expo, KY International Convention Center, Halls 1 & 2
- 1:00 p.m. – 4:00 p.m. **IES Training Simulator**
Presenter: Mark Filburn, KLC Law Enforcement Specialist
Presenter: Tony Hampton, KLC Law Enforcement Specialist
Location: Churchill Downs Suite
(See description on page 15.)
- 1:30 p.m. – 2:30 p.m. **General Session**
"Evolve or Die"
Presiding: Mayor William Paxton, KLC Second Vice President, City of Paducah
Presenter: Robin Crow, CEO/Founder of Dark Horse Recording
Location: Hyatt Regency Ballroom, 2nd Floor



You won't want to miss this entertaining general session from Robin Crow. Crow describes his journey from a struggling musician to a successful author and entrepreneur through music and storytelling. Join this compelling session that will inspire you to break free of self imposed barriers to allow you to achieve your goals and enrich your life. **Everyone in attendance will receive a complimentary copy of his book - *Evolve or Die*.**

Thursday September 16

2:30 p.m. – 3:00 p.m.

Book Signing by Robin Crow

Location: Hyatt Regency Ballroom Lobby

2:45 p.m. – 4:00 p.m

Workshops

Back to Basics - Personnel Policies

Presenter: Temple Juett, General Counsel, KLC

Location: Pimlico B-C

When dealing with any personnel issue, an organization must use an established process which incorporates standards of conduct clearly understood by all parties. This session will discuss ways to create a consistent and unbiased system for decision making.

Long Range Planning in Your Community

Presenter: Presenter: Matt Mattingly, City Manager, City of Murray

Location: Oaklawn Room

Learn how the City of Murray used a unique approach with their 2009-10 long range planning project. Discover Murray's successes, setbacks and constraints with their journey to involve city officials, community leaders, business owners and citizens to become more involved in the city's long range planning process.

One to One - The ONE Workforce Development Tool That Your City Can't Afford to Miss!

Presenter: Polly Lusk Page, Executive Director, Northern Kentucky Education Council

Guest Speaker: Helen Carroll, Manager Community Relations, Toyota Motor Engineers and Manufacturing, North America

Guest Speaker: Tim Hanner, Superintendent Kenton County School District

Guest Speaker: Bill Scheyer, President Northern Kentucky Vision 2015

Location: Belmont Room

How do you engage education, business and community to work toward the common expectation that all students will be proficient in literacy? Learn from a panel of leaders how to focus energies from all sectors of a community in working collaboratively to change the odds for children.

2:45 p.m. – 5:00 p.m.

Workshop

The New National Healthcare Law in Your City

Presenter: Helana Darrow, Partner, Dinsmore & Shohl, LLP

Location: Gulfstream - Hialeah Rooms

This session will provide an overview of how the new national healthcare reform will affect local governments as employers.

Thursday September 16

6:30 p.m. – 7:00 p.m.

President's Reception

Location: Hyatt Regency Ballroom Lobby

7:00 p.m. – 9:00 p.m.

President's Banquet

Presiding: Neil Hackworth, Executive Director, KLC

Presiding: Mayor Elaine Walker, KLC First Vice President/Acting President, City of Bowling Green

Location: Hyatt Regency Ballroom, 2nd Floor

Join us in honoring Mayor Elaine Walker, City of Bowling Green as incoming president. We will also present the legislative awards along with special recognition to former Mayor of Jackson and KLC President, Michael Miller.

9:00 p.m. – 1:00 a.m.

Entertainment - Endless Summer Band

Location: Regency Ballroom



Back by popular demand! This band will keep you on the dance floor all night long! Bring those comfortable shoes and enjoy the popular classics to present day favorites.

CRACKER BARRELS LIST OF TOPICS

- 1. Kentucky Interagency on Homelessness**
Davey King, Kentucky Housing Corporation
Melissa Benton, Kentucky Housing Corporation
Jennifer Weeber, Hazard Perry County Community Ministries
Tom Beatty, Cabinet for Health and Family Services
- 2. Lobbying 101**
J.D. Chaney, Director of Governmental Affairs, KLC
Tony Goetz, Legislative Liaison, KLC
Bert May, Contract Lobbyist, Dinsmore & Shohl, LLP
- 3. Ask-a-Lawyer**
Laura Milam Ross, Counsel for Member Legal Services, KLC
Andrea Shindlebower, Legal Services Analyst, KLC
- 4. KLC Programs and Services**
Robin Cooper, Chief Member Services Officer, KLC
- 5. Take the Challenge**
Amanda LeFevre, Environmental Education Specialist, Division of Compliance Assistance
- 6. Department for Local Government**
Stacia Peyton, Deputy Commissioner, Department for Local Government
Amy Barnes, State Grants, Department for Local Government
Harry Carver, State Grants, Department for Local Government
Lynn Littrell, Federal Grants Executive Director, Department for Local Government
- 7. Good Ideas Swap**
Terri Johnson, Senior Marketing & Communications Manager, KLC
- 8. Cable Television 101: Cable Franchise Renewal, Transfers of Control and New Entrants Into the Cable Market**
Linda K. Ain, Attorney, The Law Firm of Linda K. Ain

Friday September 17

FRIDAY – DAILY SCHEDULE

- | | |
|------------------------|--|
| 8:00 a.m. - 2:00 p.m. | Registration |
| 8:00 a.m. - 9:15 a.m. | Breakfast Breakout: Network with Peer Cities |
| 9:30 a.m. - 11:45 a.m. | Workshops |
| 12:00 p.m. - 1:45 p.m. | Awards/Closing Luncheon |
| 1:00 p.m. - 2:00 p.m. | MAAK Meeting |
| 2:00 p.m. - 5:15 p.m. | City Attorney CLE Training |

Friday September 17

- 8:00 a.m. – 2:00 p.m. **Registration**
Delegate, Exhibitor, Guest and Speaker Registration
Location: Kentucky Suite, Hyatt Regency, 2nd Floor
- 8:00 a.m. – 2:00 p.m. **KLC Chill Zone/Internet Cafe'**
Location: Keeneland Room, Hyatt Regency, 2nd Floor
- 8:00 a.m. – 9:15 a.m. **Breakfast Breakout: Network with Peer Cities**
Grab some breakfast and spend time meeting with colleagues from cities of your same classification to share best practices and get advice from peers on specific issues. We will also be discussing classification related mandates and obstacles. Attendees drive the group discussion at a relaxed pace.
- ◆ **Merged Governments & Second Class Cities**
Moderator: Dan Kemp, Mayor, City of Hopkinsville
Location: Conference Theatre
 - ◆ **Third Class Cities**
Moderator: Donovan Blackburn, City Manager, City of Pikeville
Location: Iroquois Room
 - ◆ **Fourth Class Cities**
Moderator: Tim Williams, City Administrator, City of Crestview Hills
Location: Cherokee Room
 - ◆ **Fifth Class Cities**
Moderator: Tom Bozarth, Mayor, City of Midway
Location: Seneca Room
 - ◆ **Sixth Class Cities**
Moderator: Claude Christensen, Mayor, City of Sadieville
Location: Shawnee Room
- 9:30 a.m. – 10:30 a.m. **Workshops**
Back to Basics - Ethics
Presenter: Andrea Shindlebower, Legal Services Analyst, KLC
Location: Pimlico B-C
- This course examines the importance of ethical conduct in city government. Participants will hear an overview of Kentucky's ethics laws and regulations that apply to municipal officials, as well as discuss common ethical dilemmas that city officials may face.

Grant Writing Part I: Strategic Grants Development

Presenter: Michael Kannensohn, President, Strategic Funding Group

Presenter: Jacqueline Long, Grants Consultant, Strategic Funding Group

Location: Gulfstream - Hialeah Rooms

This workshop will explore current grant funding opportunities for cities. Michael Kannensohn will focus on where to find grant monies and what is available to address funding needs of cities. This session will also highlight strategic grants planning as a way to more precisely target grant funding sources.

Leadership Communities: 5 Key Things Every City Leader Should be Discussing

Presenter: Carolyn Witt Jones, Special Assistant, Partnership at NewCities

Presenter: Tom Prather, Executive Vice President/Acting President, NewCities Institute

Guest Speaker: Gary Crenshaw, Mayor, City of Lebanon

Guest Speaker: Tom Lund, Executive Director of Economic Development, Marion County

Guest Speaker: John G. Mattingly, County Judge Executive, Marion County

Guest Speaker: Roger Marcum, Executive Vice President, St. Catherine College

Location: Belmont Room

Tight budget? Shrinking resources? Collaboration among local leaders is something our citizens have come to expect. We'll share the information that you need to know RIGHT NOW to get your community on the same page.

9:30 a.m. - 11:45 a.m

Workshop

A Taste of SMART Conversations

Presenter: Tad Long, Director of Business Development, NCI

Location: Oaklawn Room

Developing consensus takes a lot of commitment to achieve results. If you want your employees, staff and community to be, talk, think and act together, you need a foundation of Shared Meaning, Authenticity, Respect and Trust. Join us for a "taste of SMART Conversations" to learn more about these powerful skills. (Great for your personal life, too!)

Friday September 17

10:45 a.m. – 11:45 a.m

Workshops

Back to Basics - Abandoned & Foreclosed Properties

Presenter: Donovan Blackburn, City Manager, City of Pikeville

Presenter: J.D. Chaney, Director of Governmental Affairs, KLC

Facilitator: George Cheatham, Mayor, City of Greensburg

Location: Pimlico B-C

As the number of foreclosed properties has increased, some Kentucky neighborhoods have become overrun with blight. While these homes are in foreclosure limbo, many cities are forced to increase policing efforts, as well as maintain the properties at a high cost to taxpayers. Come find out how some cities are handling this issue, as well as how your city can recoup costs through lien priority.

Stop Crowding MySpace and Get Out of My Face(book)! A City's Guide to Social Networking in the Workplace

Presenter: Joshua Salsburey, Attorney at Law, Sturgill, Turner, Barker & Moloney, PLLC

Location: Belmont Room

This workshop will introduce city management and city attorneys to basic "dos" and "don'ts" for cities considering the use of social network websites like Facebook and MySpace for uses such as screening applicants or monitoring and investigating employee conduct. This workshop will also discuss whether and when the law may allow cities to discipline employees based on things they say or post on social networking websites.

Grant Writing Part II: Strategies for Writing a Successful Grant Proposal

Presenter: Michael Kannensohn, President, Strategic Funding Group

Presenter: Jacqueline Long, Grants Consultant, Strategic Funding Group

Location: Gulfstream - Hialeah Rooms

In Part II of the Strategic Grants Development workshop, Jackie Long will present an overview of how to write a grant proposal with emphasis on strategies for strengthening the overall proposal to increase chances of funding.

Friday September 17

- 12:00 p.m. – 1:45 p.m. **Awards/Closing Luncheon**
Location: Hyatt Regency Ballroom, 2nd Floor
- Join us in honoring the accomplishments of individuals and cities from across the commonwealth as we present the Public Officials Essential Skills Institute (POESI) Awards, Enterprise Cities Award winners, Insurance Scorecard presentations along with the City Official and City Employee of the Year Awards.
- 1:00 p.m. – 2:00 p.m. **Municipal Attorneys Association of Kentucky (MAAK) Meeting**
Presiding: Bryan Beauman, Executive Director
Location: Hyatt Regency Conference Theatre, 2nd Floor
- 2:00 p.m. – 5:15 p.m. **City Attorney CLE - The Landscape of Drug and Alcohol Testing Policies in the Workplace**
Presenter: Dr. Paula Maionchi, M.D., J.D., MRO of Drug & Alcohol Testing Programs, Occupational Medicine Center
Location: Hyatt Regency Conference Theatre, 2nd Floor
- A municipality may not require all employees to submit to random drug testing. Nevertheless, there are instances when a public employer may require drug testing that has been upheld by the courts. Attend this continuing legal education (CLE) opportunity to get more information on when drug testing is appropriate and how to properly administer drug free workplace policies. Application for approval of this activity for 3.0 credits is pending before the Kentucky Bar Association Continuing Legal Education Commission.

Notes

KLC Staff

EXECUTIVE OFFICES



Neil S. Hackworth
Executive Director
nhackworth@klc.org



Temple Juett
General Counsel
tjuett@klc.org



Tom Prather
Acting President/ Executive Vice
President, NewCities Institute
tprather@klc.org



Robin Cooper
Chief Member Services
Officer
rcooper@klc.org



Doug Goforth
Chief Financial Officer
dgoforth@klc.org



Jeri McCullough
Executive Projects
Administrator
jmcullough@klc.org



Freda Meriwether
Executive Asst. to the
Executive Director/CEO
fmeriwether@klc.org

KLC Staff



Ryan Zavitz
Controller
rzavitz@klc.org



Rhonda Dummitt
Accountant
rdummitt@klc.org



Sharon Ferguson
Sr. Accounting Analyst
sferguson@klc.org



Katie Hook
Senior Accountant II
khook@klc.org



Renee Hurst
Senior Accountant
rhurst@klc.org



Amy D. Loftus
Senior Accountant
alofus@klc.org



Raymie Scrivner
Accountant
rscrivner@klc.org



Becky Watts
Senior Accountant
bwatts@klc.org

KLC Staff

ADMINISTRATION & HUMAN RESOURCES



Martha Cosby
Director of Human
Resources
mcosby@klc.org



Eleanor Barbour
Legal Assistant
ebarbour@klc.org



Lana McCoy
Insurance Assistant
lmccoy@klc.org



Pamela Murphy
Travel & Facilities
Coordinator
pmurphy@klc.org



Rick Powell
Administrative
Services Coordinator
rpowell@klc.org



Lynda Schwendeman
Registrar/Admin.
Assistant
lschwendeman@klc.org



W. Kaye Smith
Receptionist/Admin.
Assistant
ksmith@klc.org

KLC Staff

ADVOCACY/LEGISLATIVE



J.D. Chaney
Director of
Governmental Affairs
jchaney@klc.org



Tony Goetz
Legislative Liaison
tgoetz@klc.org



Sarah Razor
Govt. Affairs & Policy
Comm. Specialist
srazor@klc.org



Laura Ross
Legal Services Counsel
lross@klc.org



Andrea Shindlbower
Legal Services Analyst
ashindlbower@klc.org



Tresa Short
Legislative Admini-
strative Coordinator
tshort@klc.org



Christine de Briffault
Law Clerk
cdebriffault@klc.org

KLC Staff



Robin Cooper
Chief Member Services
Officer
rcooper@klc.org



Garrett Drakeford
Director of Financial
Services
gdrakeford@klc.org



Nancy C. Wylie
Municipal Finance
Advisor
nwylie@klc.org

FINANCIAL SERVICES

KLC Staff



Temple Juett
General Counsel
tjuett@klc.org



Robyn Miller
Corporate Attorney
rmiller@klc.org



Eleanor Barbour
Legal Assistant
ebarbour@klc.org

KLC Staff



Nick Harpe
Information
Technology Manager
nharpe@klc.org



Ryan Adkins
Insurance Systems
Administrator
radkins@klc.org



Larry Dinsmore
Database Administra-
tor/Systems Analyst
ldinsmore@klc.org



Deron Sizemore
IT Support Technician
dsizemore@klc.org



Sean Walker
Systems Analyst
swalker@klc.org

INFORMATION TECHNOLOGY

KLC Staff



Joe O'Nan
Administrator of
Agency Operations
jonan@klc.org



Tammy Crawford
Account Associate
tcrawford@klc.org



Callie Dezarn
Insurance Communi-
cations & Training Asst.
cdezarn@klc.org



Lydia Heathman
Account Specialist
lheathman@klc.org



Larry E. Moore
Administrator of
New Accounts
lmoore@klc.org



Marty Nemes
Marketing Agent
mnemes@klc.org



Michael Goff
Administrator of
Product Development
mgoff@klc.org

KLC Staff



Temple Juett
General Counsel
tjuett@klc.org



Zilda Henson
Claims Analyst
zhenson@klc.org



Pat Reeves
Litigation Management Specialist
preeves@klc.org



Hayley Young
Claims Program Administrator
hyoung@klc.org

INSURANCE - CLAIMS

KLC Staff

INSURANCE - LOSS CONTROL



Ned Wertz
Director of Underwriting
nwertz@klc.org



Jeremy Baird
Loss Control Specialist
jbaird@klc.org



Brian Dickey
Risk Management Specialist
bdickey@klc.org



Mark Filburn
Law Enforcement Specialist
mfilburn@klc.org



Tony Hampton
Law Enforcement Specialist
thampton@klc.org



Layman Hawkins
Utility Specialist
lhawkins@klc.org



Joe Isaacs
Loss Control Specialist
jisaacs@klc.org



Gary Musgrave
Loss Control Associate
gmusgrave@klc.org



Douglas Oskins
Industrial Hygienist
doskins@klc.org



Greg Partin
Loss Control Specialist
gpartin@klc.org



Howard Rosewell
Property Specialist
hrosewell@klc.org



Lana McCoy
Insurance Assistant
lmccoy@klc.org

KLC Staff



Heidi A. Lynn
Administrator of
Member Benefits
hlynn@klc.org



Tammy Powell
Member Benefits
Associate
tpowell@klc.org



Wilma Wilson
Workplace Wellness
Coordinator
wwilson@klc.org

INSURANCE - MEMBER BENEFITS

KLC Staff



Ned Wertz

Director of Underwriting

nwertz@klc.org



Suzanne Reed

Senior Underwriter

sreed@klc.org



Nancy Resinger

Underwriter

nresinger@klc.org



Linda G. Shearer

Senior Underwriter

lshearer@klc.org

KLC Staff

MEMBER SERVICES



Robin Cooper
Chief Member Services
Officer
rcooper@klc.org



Kirby Ramsey
Director of Marketing
kramsey@klc.org



Terri Johnson
Senior Marketing &
Comm. Manager
tjohnson@klc.org



Doreen Caines
Desktop Publisher
dcaines@klc.org



Ulysses C. Hayes
Graphic Designer
uhayes@klc.org



Carson Kerr
Member Services
Associate
ckerr@klc.org



Rebecca Morton
Leadership Education
Administrator
rmorton@klc.org



Tammy Penna
Special Events
Coordinator
tpenna@klc.org



Terry Ueber
Marketing & Expo
Coordinator
tueber@klc.org

KLC Staff



Joe Ewalt
Director of Policy
Development
jewalt@klc.org



Joseph Coleman
Policy, Research &
Federal Relations Mgr.
jcoleman@klc.org



Barb Pace
Resource Librarian
bpace@klc.org

KLC Staff



Tom Prather
Executive Vice President,
NewCities Institute
tprather@klc.org



Bobbie Bryant
Director of Public
Affairs
bbryant@klc.org



Tad Long
Director of Business
Development
tlong@klc.org



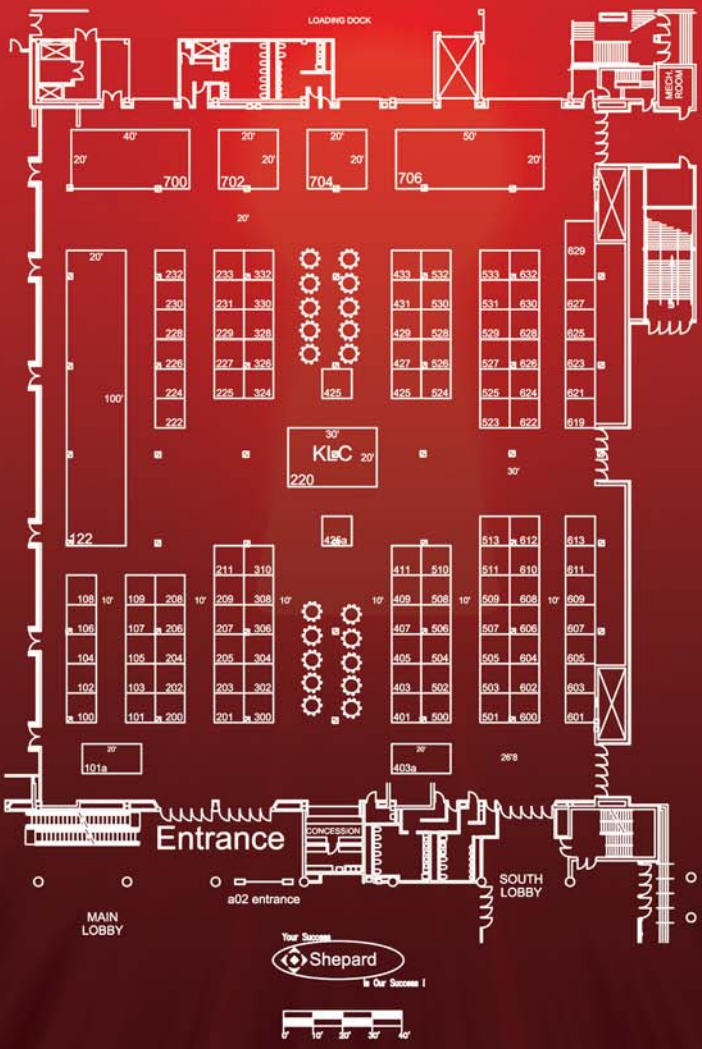
Lynda Schwendeman
Registrar/Admin.
Assistant
lschwendeman@klc.org

NEWCITIES INSTITUTE®

Notes



Kentucky International Convention Center Exhibit Hall Floor Plan



Exhibitor Directory

Listed Alphabetically

❖ A to Z Muni-Dot Company	601
Alexander Thompson Arnold CPAs	324
Allied Municipal Supply	621
❖ American Fidelity Assurance Company	619
❖ Ameron International	624
❖ Bachman Auto Group	425, 425a
Bank of New York Mellon Trust Company	612
Bell Engineering	224
Best Equipment Co, Inc.	502, 504
❖ Bluegrass Recreational Products, Inc.	531
Brandstetter Carroll Inc.	207
CDP Engineers, Inc.	310
CDS Associates, Inc.	202
CMI Equipment Sales, Inc.	300
CMW Inc	326
❖ Code Administrators Association of Kentucky	203
Codell Construction Company	102
Collins and Company, Inc.	211
❖ Community Ventures Corporation	403
❖ Countryside Play Structures	109
David Williams & Associates, Inc.	509
❖ Department for Environmental Protection	429
Equipment Marketing Co	225
Fifth Third Bank	405
First Kentucky Securities Corporation	411
Freedom Dodge	101a, 403a
GovDeals, Inc.	505
❖ GovMapper	511

Exhibitor Directory

Listed Alphabetically

GRW	508
Health Systems International, LLC	306
Integrity HR	513
Kentucky American Water	101
Kentucky League of Cities Insurance Agency	503
Kentucky Livestock Coalition	328
Kentucky Municipal Clerks Association	527
Kentucky Public Employees Deferred Compensation Authority	208
Kentucky Ready Mixed Concrete Association	525
Kentucky Transportation Center, Technology Transfer	431
❖ Kenway Distributors, Inc.	427
❖ Kidz Zone Play Systems	205
KVS Information Systems, Inc.	304
KY Recycling Trailers	704
❖ Local Government Corporation	302
❖ MASA Inc.	100
Miracle Recreation of KY & TN	227
MSE of Kentucky, Inc.	204
Municipal Equipment, Inc.	401
National League of Cities	207
❖ New Government Directions, LLC	104
New Heights	106
Paducah Transit Systems	710
Philips Hadco	510
Plantmix Asphalt Industry of Kentucky	226
Pontem Software	524
RBS Design Group Architecture	425
Ross, Sinclair & Associates	632

Exhibitor Directory

Listed Alphabetically

Rumpke of Kentucky	500
Sister Cities International	526
Software Solutions	222
❖ Soprema	209
Springbrook Software	407
Sternberg Lighting	201
❖ Sterne Agee & Leach	228
Strand Associates	409
Strategic Funding Group, Inc.	308
Stringfellow, Inc.	700
Sturgill, Turner, Barker & Moloney, PLLC	523
Sweep All, Inc.	233, 702
❖ TAPCO	622
❖ Total ID Solutions	602
United Systems and Software	611
United Systems Technology Inc.	103
University of Kentucky College of Agriculture	627
US Bank National Association	108
Utility Service Co. Inc.	200
WonWay Communication	330

Cornerstone Partners highlighted in **yellow**. First time exhibitors denoted with ❖.

Cornerstone Parters

GRANITE PARTNERS



MARBLE PARTNERS



Cornerstone Partners

SLATE PARTNERS



LIMESTONE PARTNERS

Agility Recovery Solutions
Alexander Thompson Arnold CPAs
Bank of New York
CDP Engineers, Inc.
Codell Construction Company
Community Ventures Corporation
GRW, Inc.
IMI South, LLC/Irving Materials
Integrity HR

Kentucky Ready Mixed Concrete Association
Meraki, Inc.
National City Finance
Strategic Funding Group, Inc.
Stringfellow, Inc
Sweeney and Fiser, PLLC
Wilbur Smith & Associates

GRANITE PARTNER



Central Bank

Showing you the way.

www.centralbank.com
859-253-6222

Member FDIC



GRANITE PARTNER



Collins & Company, Inc.

www.collinsandco.com

Independent Insurance Adjusting Services
and Third Party Administrators

Kentucky Locations:
Lexington, Louisville, Mayfield and
Prestonsburg

Send claims to: claims@collinsandco.com

24 Hour Emergency Claims Service for Any Office (800) 884-1535

GRANITE PARTNER



GRANITE PARTNER



PEEL & HOLLAND Financial Group

Established 1924

INSURANCE • RISK CONSULTING • EMPLOYEE BENEFITS

Proudly Representing
Kentucky League of Cities
Public Sector Insurance
& Risk Reduction Programs

Jerry Pace

www.peelholland.com

800.599.8621

GRANITE PARTNER

k

FIRST KENTUCKY SECURITIES CORPORATION

Frankfort, Lexington, Louisville, Kentucky

Investment Management, Brokerage,
Fiscal Agent and Portfolio Advisory Services

www.firstky.com

(800) 383-4237 Frankfort - (877) 890-7288 Louisville

MEMBER FINRA, SIPC, MSRB

MARBLE PARTNER

**DENTON
& KEULER**
Attorneys at Law

Denton & Keuler, LLP
555 Jefferson Street, Suite 301
Paducah, Kentucky 42001
(270) 443-8253, www.dklaw.com

This is an advertisement

MARBLE PARTNER

Hall & Clark Insurance Agency, Inc.



*Proud supporter of the
Kentucky League of Cities!*

PO Box 508, Prestonsburg, KY 41653, 606-886-2318, www.hall-clark.com

MARBLE PARTNER

HSI Health
Systems
International

HSI_{RX}

Specialists in Workers' Compensation:

- Medical Bill Review
- Specialty Audit Services
- Pharmacy Benefit Management
- Medicare Set-Aside Allocations
- Utilization Management
- CMS Mandatory Insurer Reporting

www.us-hsi.com

ALL ABOUT BONDS

\$10.5 BILLION LAST YEAR
\$42 BILLION IN THE LAST FIVE YEARS

PECK SHAFFER



Proud Sponsor of the
Kentucky League of Cities
2008 Convention & Expo

WWW.PECKSHAFFER.COM

MARBLE PARTNER

Proudly Representing



A SERVICE OF THE KENTUCKY LEAGUE OF CITIES



ROEDING GROUP COMPANIES

Sue G. Porter
Public Entity Insurance

1056 Wellington Way, Ste. 130
Lexington, KY 40513
Ph 859.296.4580 • Fx 859.296.4583
Toll Free 1-888.696.9620
Cell 859.221-2779
sporter@roeding.com
www.roeding.com

MARBLE PARTNER

WE
KNOW
CITIES

ATTORNEYS AT LAW, FOUNDED 1957



STURGILL, TURNER
BARKER &
MOLONEY, PLLC
333 WEST VINE STREET
SUITE 1400
LEXINGTON, KY 40507
(859) 255-8581
WWW.STURGILLTURNER.COM

MARBLE PARTNER

Your specialist in public sector financing

Tony Thompson Vice President
931-680-2587
tony.thompson1@usbank.com

Proud partner of
the Kentucky
League of Cities.



usbank.com

Member FDIC

2492

MARBLE PARTNER

Notes

Adams

STEPNER, WOLTERMANN & DUSING, PLLC

Providing "Key" Legal Solutions for
Your Legal Problems for over 100 Years



Areas of Governmental Practice

Civil Rights
Employment Law
Municipal Law
Open Records
Governmental Tort

A Proud Legal Partner to the Kentucky League of Cities

Jeffrey C. Mando
Attorney at Law

40 West Pike Street
Covington, KY 41011
859-394-6200
www.aswdlaw.com

MARK YOUR CALENDAR

Watch your mail, email and www.klc.org for more information.

CITY OFFICIALS ORIENTATION (COO)

December 7, 2010 ♦ Paducah & Madisonville

December 8, 2010 ♦ Glasgow & Elizabethtown

December 9, 2010 ♦ Jefferson County & Covington

December 14, 2010 ♦ Lexington

December 15, 2010 ♦ Grayson

December 16, 2010 ♦ Prestonsburg & London

CITY OFFICIALS ACADEMY (COA)

January 19 – 21, 2011 ♦ Griffin Gate Marriott, Lexington

January 26 – 28, 2011 ♦ Cave City Convention Center, Cave City

CITY DAY & CITY NIGHT

February 9, 2011 ♦ Frankfort Convention Center, Frankfort

KENTUCKY MUNICIPAL ENVIRONMENTAL SAFETY & HEALTH ASSOCIATION (KMESHA) CONFERENCE

March 2 – 4, 2011 ♦ Lake Barkley State Resort Park, Cadiz

100 East Vine Street, Suite 800, Lexington, KY 40507

859.977.3700 Fax 859.977.3703

www.klc.org