



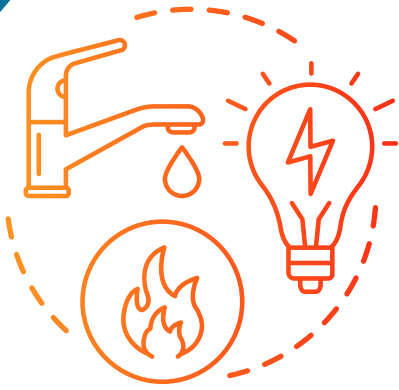
2025



KENTUCKY LEAGUE OF CITIES UTILITIES PROGRAM

For nearly 100 years, the Kentucky League of Cities (KLC) has worked in the best interest of local municipalities and agencies. KLC is among the top municipal leagues in the nation with innovative programs and services and unparalleled legislative success. KLC Utilities Program participants benefit from an elevated experience with our vast resources as well as fresh, new opportunities to meet their ongoing and ever-changing needs.

At KLC, we are proud to serve those who serve. Your success is our goal, and we are your first call for service.



KLC PROVIDES:

- ◆ Emphasis on needs of local utilities
- ◆ Legislative advocacy for utilities
- ◆ Research and Surveys
- ◆ Access to all services
- ◆ Dedicated staff contacts
- ◆ Specialized training/KLC member discount pricing
- ◆ Enhanced and ongoing communications
- ◆ Forums and virtual meetings
- ◆ Events management
- ◆ Sponsorships

You can always reach anyone at KLC at 800.876.4552 or 859.977.3700.

To see the entire KLC staff, visit <https://go.klc.org/Staff> or scan below.



CONTACTS:



J.D. Chaney
KLC Executive Director/CEO
jchaney@klc.org
859.608.6177 (mobile)



Kevin Howard
Berea Municipal Utilities Director and KLC Board member
859.582.0060 (mobile)

KLC General Contacts

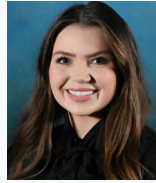


Brian Traugott
KLC Chief Member Services Officer
btraugott@klc.org



Terri Johnson
KLC Member Relations Manager
tjohnson@klc.org
859.229.0427 (mobile)

Legislative Advocacy



Gracie Kelly
KLC Director of Government Affairs
gkelly@klc.org



Jason Baird
Limestone Group
jason@limestonegrp.com
859.396.0417 (mobile)

Training/Education



Amy Stout
KLC Member Education Manager
astout@klc.org

Research/Surveys



Scott Tremoulis
KLC Research Economist
stremoulis@klc.org

Sponsorships



Sarah Stoll
KLC Business Development Manager
sstoll@klc.org

Financial Services



Steven Pickarski
KLC Financial Services Manager
spickarski@klc.org

KLC Municipal Law



Morgain Patterson
KLC Director of Municipal Law
mpatterson@klc.org